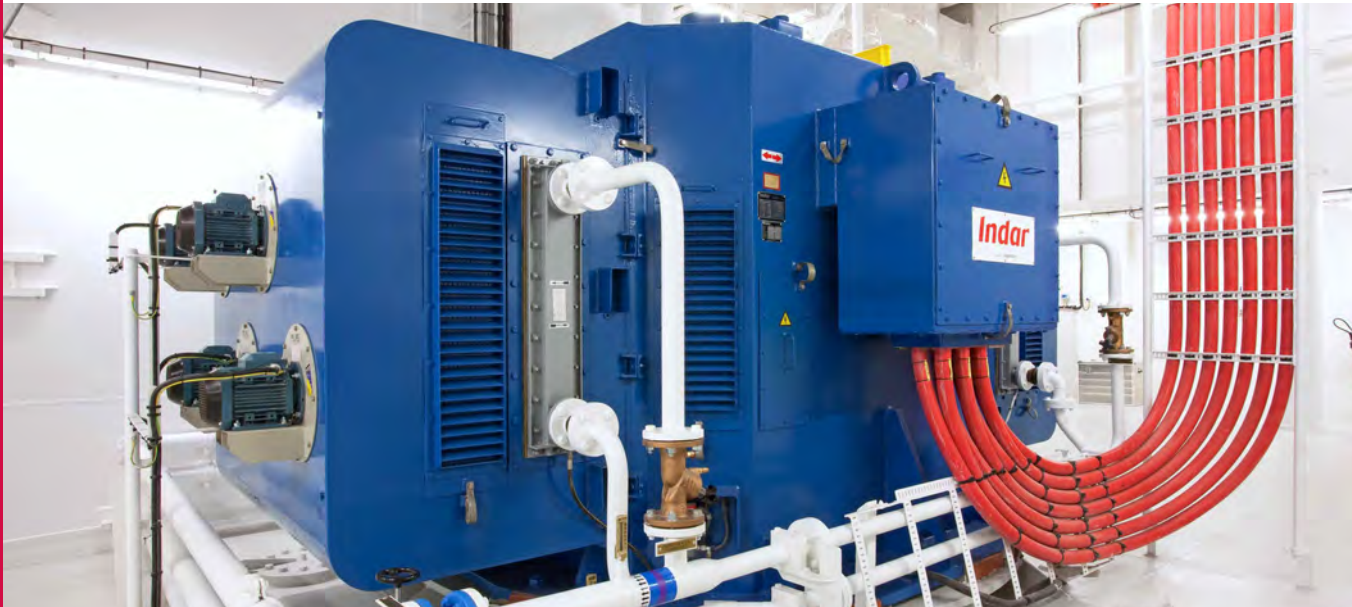


INDAR Marine References



CLIENTE <i>Customer</i>	PAIS <i>Country</i>	MOTOR GENERADOR	POTENCIA <i>Power</i>	VELOCIDAD <i>Speed</i> (rpm)	TENSION <i>Voltage</i> (V)	CANTIDAD <i>Quantity</i>	SIZE <i>Tamaño</i>	ENTREGA <i>Delivery</i>
INGETEAM POWER TECHNOLOGY-MARINE	SPAIN	M	1050	190	690	2	710	2013
STX OSV ELECTRO AS	NORWAY	M	2200	1200	690	1	500	2013
STX OSV ELECTRO AS	NORWAY	M	2200	1200	690	1	500	2013
STX OSV ELECTRO AS	NORWAY	M	1200	1200	660	2	450	2013
TECHSOL MARINE Inc.	VIETNAM	M	2800	1200	690	1	500	2013
TECHSOL MARINE Inc.	VIETNAM	M	2800	1200	690	1	500	2012
STX OSV ELECTRO, A.S.	SINGAPORE	M	2000	1200	660	12	500	2013
STX OSV ELECTRO, A.S.	SINGAPORE	M	1600	1800	690	6	450	2013
ULSTEIN POWER & CONTROL	NORWAY	M	2200	1200	660	2	500	2012
ULSTEIN POWER & CONTROL	NORWAY	M	2200	1200	660	2	500	2013
ULSTEIN POWER & CONTROL	NORWAY	M	2200	1200	660	2	500	2012
COMBINATIE CROON BAKKER	HOLLAND	M	2500	0-660	660	3	630	2012
COMBINATIE CROON BAKKER	HOLLAND	M	1500	800	660	2	500	2012
COMBINATIE CROON BAKKER	HOLLAND	M	2400	900	660	1	630	2012
BAKKER SLIEDRECHT Electro Industrie B.V.	CROATIA	M	1500	1200	660	1	450	2012
C.M.R. (Far East) Pte. Ltd.	SINGAPORE	M	600	1200	690	2	400	2013
C.M.R. (Far East) Pte. Ltd.	SINGAPORE	M	600	1200	690	1	400	2013
C.M.R. (Far East) Pte. Ltd.	SINGAPORE	M	1000	1200	690	3	400	2013
STX Osv	SINGAPORE	M	1600	1200	660	2	450	2012
INGETEAM POWER TECHNOLOGY S.A.	BRASIL	M	2500	900	690	2	560	2012
ABB OY	ITALY	M	2800	300	6630	2	900	2012
COMBINATIE CROON BAKKER	HOLLAND	M	2200	800	600	2	630	2012
COMBINATIE CROON BAKKER	HOLLAND	M	2400	900	660	2	630	2012
COMBINATIE CROON BAKKER	HOLLAND	M	2950	600	660	1	630	2012
COMBINATIE CROON BAKKER	HOLLAND	M	2950	600	660	2	630	2012
INGETEAM MARINE	BELGIUM	G	5000	1500	690	1	710	2012
BAKKER	MALAYSIA	M	430	600	660	4	450	2012
BAKKER	MALAYSIA	M	1500	1200	660	2	450	2012
BAKKER	MALAYSIA	M	3000	1200	660	2	560	2012
BAKKER	MALAYSIA	G	9500	1200	6600	2	900	2012
STX OSV	ROMANIA	M	1900	1200	690	2	500	2012
STX OSV	ROMANIA	M	2200	900	660	2	500	2012
STX OSV	ROMANIA	M	2200	900	660	2	500	2012
STX OSV	ROMANIA	M	2200	900	660	2	500	2012
ABB OY	ITALY	M	0-2300	0-181	0-660	2	900	2012
BAKKER Sliedrecht	SPAIN	M	0-250	0-600	0-690	1	400	2012

CLIENTE <i>Customer</i>	PAIS <i>Country</i>	MOTOR GENERADOR	POTENCIA <i>Power</i>	VELOCIDAD <i>Speed</i> (rpm)	TENSION <i>Voltage</i> (V)	CANTIDAD <i>Quantity</i>	SIZE <i>Tamaño</i>	ENTREGA <i>Delivery</i>
L-3 MARINE SYSTEMS	SINGAPORE	M	2600	155	690	2	1000	2012
L-3 MARINE SYSTEMS	SINGAPORE	M	1200	900	690	1	450	2012
JAN DE NUL	SINGAPORE	G	12500/8750	1200/840	6000/4200	2	900	2012
FINCANTIERI CANTIERI NAVALI	ITALY	M	1200	900	6.600	1	500	2012
BAKKER Sliedrecht	HOLAND	M	920	1000/1800	600	1	560	2012
INGETEAM MARINE	BRASIL	M	2500	900	690	2	560	2012
STX OSV	NORWAY	M	2200	1200	660	2	500	2012
STX OSV	NORWAY	M	2200	1200	660	2	500	2012
STX OSV	NORWAY	M	2200	1200	660	2	500	2012
STX OSV	NORWAY	M	1200	1800	660	1	400	2012
STX OSV	NORWAY	M	1200	1800	660	1	400	2012
STX OSV	NORWAY	M	1200	1800	660	1	400	2011
STX OSV	ROMANIA	M	2000	1200	660	2	500	2012
STX OSV	VIETNAM	M	2000	1200	660	2	500	2011
STX NORWAY ELECTRO	NORWAY	M	0-1600	0-1200	660	2	450	2011
BAKKER SLIEDRECHT	HOLLAND	M	0-3500	0-1000	0-3100	1	630	2011
INGETEAM MARINE	BELGIUM	G	5625	720	6600	5	900	2012
INGETEAM MARINE	SPAIN	M	0-2000	0-750	0-3300	2	560	2012
INGETEAM MARINE	SPAIN	M	0-3350	0-1000	0-3300	4	630	2012
INGETEAM MARINE	SPAIN	M	0-2000	0-750	0-3300	2	560	2012
BAKKER SLIEDRECHT	HOLLAND	M	0-800	0-750	660	1	450	2011
STX NORWAY ELECTRO	NORWAY	M	0-2200	0-1200	0-660	2	500	2011
BAKKER SLIEDRECHT	CHINA	M	0-4500	0-420	0-2900	1	800	2012
BAKKER SLIEDRECHT	HOLLAND	M	0-800	0-750	0-660	4	450	2012
BAKKER SLIEDRECHT	HOLLAND	M	0-3000	0-1000	0-3100	2	630	2012
BAKKER SLIEDRECHT	HOLLAND	M	0-5000	0-1111	0-3100	1	710	2011
BAKKER SLIEDRECHT	HOLLAND	M	0-5000	0-1111	0-3100	2	710	2011
BAKKER SLIEDRECHT	HOLLAND	M	0-3000	0-1000	0-3100	2	630	2011
INGETEAM MARINE	SOUTH KOREA	M	0-4000	0-1000	0-690	1	630	2011
INGETEAM MARINE	SOUTH KOREA	M	0-1500	0-900	0-690	1	500	2011
STX NORWAY ELECTRO	NORWAY	M	0-2000	0-1200	0-660	2	500	2011
STX NORWAY ELECTRO	INDIA	M	0-1600	0-1200	0-660	2	450	2012
STX NORWAY ELECTRO	INDIA	M	0-1600	0-1200	0-660	2	450	2012
STX NORWAY ELECTRO	INDIA	M	0-1600	0-1200	0-660	2	450	2012
STX NORWAY ELECTRO	INDIA	M	0-1600	0-1200	0-660	2	450	2012
BAKKER SLIEDRECHT	HOLLAND	M	1250	330	660	1	710	2011
BAKKER SLIEDRECHT	HOLLAND	M	0-1750/1750	0-1200	0-660	2	450	2011
BAKKER SLIEDRECHT	HOLLAND	M	0-1750/1750	0-1200	0-660	2	450	2011

CLIENTE <i>Customer</i>	PAIS <i>Country</i>	MOTOR GENERADOR	POTENCIA <i>Power</i>	VELOCIDAD <i>Speed</i> (rpm)	TENSION <i>Voltage</i> (V)	CANTIDAD <i>Quantity</i>	SIZE <i>Tamaño</i>	ENTREGA <i>Delivery</i>
INGETEAM MARINE	CROATIA	M	0-8500	0-1000	2X3X3150	1	1000	2011
STX NORWAY ELECTRO	VIETNAM	M	0-2000	0-1200	0-660	2	500	2011
STX NORWAY ELECTRO	NORWAY	M	0-2000	0-1200	0-660	2	500	2011
STX NORWAY ELECTRO	VIETNAM	M	0-2000	0-1200	0-660	2	500	2011
ULJANIK BRODOGRADILISTE D.D.	CROATIA	G	8750	1200	6600	2	900	2012
STX NORWAY ELECTRO	NORWAY	M	0-2200	0-1200	0-660	2	500	2011
INGETEAM MARINE	CROATIA	M	0-8500	0-1000	2 x3 x3150	1	1000	2011
ULJANIK BRODOGRADILISTE D.D.	CROATIA	G	8750	1200	6600	2	900	2011
ULJANIK BRODOGRADILISTE D.D.	CROATIA	M	0-8500	0-1000	2 x3 x3150	1	1000	2012
BAKKER SLIEDRECHT	EMIRATOS ARABES	G	800	1000	380	1	450	2011
BAKKER SLIEDRECHT	BELGIUM	M	0-520	0-350	0-660	2	500	2011
STX NORWAY ELECTRO	NORWAY	M	0-1600	0-1000	0-660	3	500	2011
STX NORWAY ELECTRO	NORWAY	M	0-550	0-1108	0-660	2	400	2011
STX NORWAY ELECTRO	NORWAY	M	0-550	0-1108	0-660	2	400	2011
STX NORWAY ELECTRO	NORWAY	M	0-1600	0-1000	0-660	3	500	2011
STX NORWAY ELECTRO	ROUMANIA	M	0-2500	0-1200	0-660	2	500	2010
STX NORWAY ELECTRO	ROUMANIA	M	0-2500	0-1200	0-660	2	500	2011
BAKKER SLIEDRECHT	HOLLAND	M	0-340	0-1000	0-660	1	400	2010
INGETEAM MARINE	KOREA	G	4815	750	690	2	900	2010
INGETEAM MARINE	KOREA	G	4815	750	690	2	900	2010
INGETEAM MARINE	SOUTH KOREA	M	0-750-750	0-1000/1050	0-660/660	1	450	2010
INGETEAM MARINE	SOUTH KOREA	M	0-750-750	0-1000/1050	0-660/660	1	450	2010
ULSTEIN POWER & CONTROL A.S.	NORWAY	M	0-450	0-1200	0-690	2	400	2010
ULSTEIN POWER & CONTROL A.S.	NORWAY	M	0-1550	0-1200	0-690	2	450	2010
ULSTEIN POWER & CONTROL A.S.	NORWAY	M	0-450	0-1200	0-690	2	400	2010
ULSTEIN POWER & CONTROL A.S.	NORWAY	M	0-1550	0-1200	0-690	2	450	2010
INGETEAM MARINE	BELGIUM	M	0-7500	0-1000	3300	1	900	2010
BAKKER SLIEDRECHT	HOLLAND	M	0-410	0-1500	0-500	1	355	2010
INGETEAM MARINE	BRASIL	M	0-1600	0-1600	0-690	3	450	2010
INGETEAM MARINE	BRASIL	M	0-1600	0-1600	0-690	3	450	2010
INGETEAM MARINE	SPAIN	M	0-2150	0-600	0-3300	1	560	2010
CMR	CHINA	M	0-1120	0-1200	0-690	2	450	2010
CMR	CHINA	M	0-2500	0-1600	0-690	2	500	2010
GARCIA COSTAS	SPAIN	M	720	1500	400	1	400	2010
STX EUROPE	NORWAY	M	0-550	0-1108	0-660	2	400	2010
STX EUROPE	NORWAY	M	0-1600	0-1000	0-660	3	500	2010
STX EUROPE	NORWAY	M	0-550	0-1108	0-660	2	400	2010
STX EUROPE	NORWAY	M	0-1600	0-1000	0-660	3	500	2010

CLIENTE <i>Customer</i>	PAIS <i>Country</i>	MOTOR GENERADOR	POTENCIA <i>Power</i>	VELOCIDAD <i>Speed</i> (rpm)	TENSION <i>Voltage</i> (V)	CANTIDAD <i>Quantity</i>	SIZE <i>Tamaño</i>	ENTREGA <i>Delivery</i>
STX EUROPE	NORWAY	M	0-550	0-1108	0-660	2	400	2010
STX EUROPE	NORWAY	M	0-1600	0-1000	0-660	3	500	2010
BAKKER SLIEDRECHT	HOLLAND	M	0-1250	0-900	0-690	2	450	2010
BAKKER SLIEDRECHT	HOLLAND	M	0-1000	0-1800	0-690	2	400	2010
BAKKER SLIEDRECHT	BELGIUM	G	2500	720	3300	1	710	2010
INGETEAM MARINE	SPAIN	M	0-525	0-1800	0-690	1	400	2009
INGETEAM MARINE	BELGIUM	G	13500	1200	6600	2	900	2009
INGETEAM MARINE	SPAIN	M	1350	900	6600	3	500	2009
INGETEAM MARINE	SPAIN	M	0-7500	0-1000	0-3100	2	900	2010
INGETEAM MARINE	SPAIN	M	1600	900	6600	2	500	2009
BAKKER SLIEDRECHT	HOLLAND	M	0-3000	0-1000	0-3100	2	630	2010
BAKKER SLIEDRECHT	HOLLAND	M	0-3000	0-1000	0-3100	2	630	2010
BAKKER SLIEDRECHT	HOLLAND	M	0-800	0-750	0-660	4	450	2010
BAKKER SLIEDRECHT	HOLLAND	M	0-5000	0-1111	0-3100	3	710	2010
BAKKER SLIEDRECHT	SPAIN	M	0-3400/3400	0-280/320	0-3100/3100	2	800	2009
BAKKER SLIEDRECHT	SPAIN	M	0-3400/3400	0-280/320	0-3100/3100	1	800	2010
BAKKER SLIEDRECHT	HOLLAND	M	0-2500	0-660	0-660	3	630	2009
BAKKER SLIEDRECHT	HOLLAND	M	0-2400	0-900	0-660	1	630	2009
BAKKER SLIEDRECHT	HOLLAND	M	0-1500	0-800	0-660	2	500	2009
ABB OY	ITALY	M	0-2300	0-181	0-660	2	900	2009
ABB OY	ITALY	M	0-2300	0-181	0-660	2	900	2009
BAKKER SLIEDRECHT	HOLLAND	M	0-2000	0-450	0-3300	1	800	2010
BAKKER SLIEDRECHT	HOLLAND	M	0-1500	0-1800	0-660	2	450	2008
BAKKER SLIEDRECHT	HOLLAND	M	0-410/410	0-1500/2000	0-660/660	1	355	2009
BAKKER SLIEDRECHT	HOLLAND	M	250-1250/1250	200-1000/1200	0-660/660	2	450	2009
BAKKER SLIEDRECHT	HOLLAND	M	1500-7500/7500	200-1000/1300	0-3100/3100	1	900	2009
BAKKER SLIEDRECHT	HOLLAND	M	0-700	0-1000	0-660	2	400	2009
BAKKER SLIEDRECHT	HOLLAND	M	0-410/410	0-1500/2000	0-660/660	1	355	2009
BAKKER SLIEDRECHT	HOLLAND	M	250-1250/1250	200-1000/1200	0-660/660	2	450	2009
BAKKER SLIEDRECHT	HOLLAND	M	1500-7500/7500	200-1000/1300	0-3100/3100	1	900	2009
BAKKER SLIEDRECHT	HOLLAND	M	0-700	0-1000	0-660	2	400	2009
BAKKER SLIEDRECHT	HOLLAND	M	0-410	0-1500/2000	0-660/660	1	355	2009
BAKKER SLIEDRECHT	HOLLAND	M	0-410	0-1500/2000	0-660/660	1	355	2009
BAKKER SLIEDRECHT	CROATIA	G	7778	1200	6600	3	900	2009
BAKKER SLIEDRECHT	CROATIA	M	0-5000/5000	0-1000/1200	0-3100/3100	3	710	2009
BAKKER SLIEDRECHT	CROATIA	M	0-3500/3500	0-1000/1200	0-3100/3100	2	630	2009
BAKKER SLIEDRECHT	CROATIA	M	0-3500	0-1000	0-3100	2	630	2009

CLIENTE <i>Customer</i>	PAIS <i>Country</i>	MOTOR GENERADOR	POTENCIA <i>Power</i>	VELOCIDAD <i>Speed</i> (rpm)	TENSION <i>Voltage</i> (V)	CANTIDAD <i>Quantity</i>	SIZE <i>Tamaño</i>	ENTREGA <i>Delivery</i>
INGETEAM MARINE	BELGIUM	G	5625	720	6600	5	900	2008
INGETEAM MARINE	SPAIN	M	0-3350/3350	0-1000/1200	0-3300/3300	4	630	2008
BAKKER SLIEDRECHT	HOLLAND	M	0-6000/6000	0-250/300	0-3100/3100	1	900	2009
BAKKER SLIEDRECHT	BELGIUM	M	1250	0-300	0-660	1	800	2009
BAKKER SLIEDRECHT	BELGIUM	M	1250	0-300	0-660	1	800	2009
INGETEAM MARINE	SPAIN	M	2000	0-750	0-3300	2	560	2008
INGETEAM MARINE	SPAIN	M	0-2150	0-900	0-3300	2	560	2008
INGETEAM MARINE	SPAIN	M	0-8000/8000	0-1000/1200	0-3300/3300	2	900	2008
INGETEAM MARINE	SPAIN	M	2150	900	6600	3	560	2008
INGETEAM MARINE	SPAIN	M	0-900	0-230	0-750	2	800	2009
INGETEAM MARINE	BELGIUM	G	18500	900	6600	2	1320	2009
INGETEAM MARINE	SPAIN	M	0-900	0-230	0-750	2	800	2009
BAKKER SLIEDRECHT	HOLLAND	M	2500	333	2000	1	900	2009
INGETEAM MARINE	SPAIN	M	0-3000/3000	0-1000/1200	0-690/690	1	560	2008
GOIMENDI,S.A.	HOLLAND	M	860	1800	6600	4	400	2008
GOIMENDI,S.A.	HOLLAND	M	420	1800	6600	2	400	2008
BAKKER SLIEDRECHT	HOLLAND	M	0-1200	0-1000	0-660	2	560	2009
BAKKER SLIEDRECHT	HOLLAND	M	0-1200	0-1000	0-660	2	560	2009
BAKKER SLIEDRECHT	CROATIA	M	0-3500/3500	0-1000/1200	0-3100/3100	2	630	2009
BAKKER SLIEDRECHT	CROATIA	M	0-5000/5000	0-1000/1200	0-3100/3100	3	710	2009
BAKKER SLIEDRECHT	CROATIA	M	0-3500/3500	0-1000/1200	0-3100/3100	2	630	2009
BAKKER SLIEDRECHT	CROATIA	G	7778	1200	6600	3	900	2009
BAKKER SLIEDRECHT	HOLLAND	M	0-2950	0-660	0-660	1	630	2008
BAKKER SLIEDRECHT	HOLLAND	M	0-2400	0-900	0-660	1	630	2008
BAKKER SLIEDRECHT	HOLLAND	M	550	1500	400	1	400	2008
BAKKER SLIEDRECHT	HOLLAND	M	550	1500	400	1	400	2008
BAKKER SLIEDRECHT	HOLLAND	M	0-1500	0-1000	0-660	2	500	2009
BAKKER SLIEDRECHT	HOLLAND	G	4000	600	690	2	900	2009
BAKKER SLIEDRECHT	HOLLAND	M	0-1500	0-1000	0-660	1	500	2009
BAKKER SLIEDRECHT	HOLLAND	M	0-340	0-1000	0-660	4	400	2009
INGELECTRIC INGENIERIA DE SISTEMAS S.A.	SPAIN	M	0-1300	0-1200	0-690	2	450	2008
INGELECTRIC INGENIERIA DE SISTEMAS S.A.	SPAIN	M	0-3000	0/1200	0-690	2	560	2008
INGELECTRIC INGENIERIA DE SISTEMAS S.A.	SPAIN	M	0-1200	0/1200	0-690	1	450	2008
BAKKER SLIEDRECHT	CROATIA	M	0-3500/3500	0-1000/1200	0-3100/3100	2	630	2008
BAKKER SLIEDRECHT	CROATIA	M	0-5000/5000	0-1000/1200	0-3100/3100	3	710	2008
BAKKER SLIEDRECHT	CROATIA	M	0-3500/3500	0-1000/1200	0-3100/3100	2	630	2008

CLIENTE <i>Customer</i>	PAIS <i>Country</i>	MOTOR GENERADOR	POTENCIA <i>Power</i>	VELOCIDAD <i>Speed</i> (rpm)	TENSION <i>Voltage</i> (V)	CANTIDAD <i>Quantity</i>	SIZE <i>Tamaño</i>	ENTREGA <i>Delivery</i>
BAKKER SLIEDRECHT	CROATIA	G	7778	1200	6600	3	900	2008
BAKKER SLIEDRECHT	BELGIUM	M	0-5000/5000	0-1000/1200	0-3100/3100	1	710	2008
BAKKER SLIEDRECHT	CROATIA	G	7778	1200	6600	1	900	2008
BAKKER SLIEDRECHT	CROATIA	M	0-3500/3500	0-1000/1200	0-3100/3100	2	630	2008
BAKKER SLIEDRECHT	CROATIA	G	7778	1200	6600	3	900	2008
BAKKER SLIEDRECHT	CROATIA	M	0-3500/3500	0-1000/1200	0-3100/3100	2	630	2008
BAKKER SLIEDRECHT	CROATIA	M	0-5000/5000	0-1000/1200	0-3100/3100	3	710	2008
BAKKER SLIEDRECHT	HOLLAND	M	0-3500	0-500	0-660	2	950	2009
BAKKER SLIEDRECHT	HOLLAND	G	5400	750	6600	6	900	2008
BAKKER SLIEDRECHT	HOLLAND	M	0-1150	0-1000	0-660	2	450	2009
BAKKER SLIEDRECHT	HOLLAND	M	0-5500	0-500	0-3100	2	1120	2009
INGELECTRIC INGENIERIA DE SISTEMAS S.A.	KOREA	G	5000	1500	690	2	710	2008
INGELECTRIC INGENIERIA DE SISTEMAS S.A.	KOREA	M	2150	0-1000	0-690	2	500	2008
INGELECTRIC INGENIERIA DE SISTEMAS S.A.	KOREA	M	0-1500	0-1000	0-690	2	500	2008
BAKKER SLIEDRECHT	HOLLAND	M	0-6000/6000	0-258/310	0-3100/3100	1	900	2009
BAKKER SLIEDRECHT	HOLLAND	M	0-1200	0-1000	0-660	2	560	2008
BAKKER SLIEDRECHT	HOLLAND	M	0-1200	0-1000	0-660	2	560	2009
BAKKER SLIEDRECHT	HOLLAND	M	0-1200	0-1000	0-660	2	560	2009
BAKKER SLIEDRECHT	HOLLAND	M	0-1200	0-1000	0-660	2	560	2009
GOIMENDI,S.A.	HOLLAND	M	860	1800	6600	4	400	2008
GOIMENDI,S.A.	HOLLAND	M	420	1800	6600	2	400	2008
BAKKER SLIEDRECHT	BELGIUM	M	0-6500/6500	0-253/325	0-3100/3100	2	900	2008
INGELECTRIC INGENIERIA DE SISTEMAS S.A.	SPAIN	M	0-8000	0-1000	0-3300	2	900	2007
INGELECTRIC INGENIERIA DE SISTEMAS S.A.	SPAIN	M	0-2150	0-900	0-3300	2	560	2007
INGELECTRIC INGENIERIA DE SISTEMAS S.A.	BELGIUM	G	18500	900	6600	2	1320	2007
INGELECTRIC INGENIERIA DE SISTEMAS S.A.	SPAIN	M	2150	900	6600	1	560	2007
INGELECTRIC INGENIERIA DE SISTEMAS S.A.	SPAIN	M	2150	900	6600	2	560	2008
BAKKER SLIEDRECHT	HOLLAND	M	0-750	0-1500	0-660	1	450	2007
INGELECTRIC INGENIERIA DE SISTEMAS S.A.	KOREA	M	0-4000	0-1000	0-690	1	630	2007
INGELECTRIC INGENIERIA DE SISTEMAS S.A.	KOREA	M	0-4000	0-1000	0-690	1	630	2007
INGELECTRIC INGENIERIA DE SISTEMAS S.A.	KOREA	M	0-4000	0-1000	0-690	1	630	2007
INGELECTRIC INGENIERIA DE SISTEMAS S.A.	KOREA	M	0-1500	0-900	0-690	1	500	2007

CLIENTE <i>Customer</i>	PAIS <i>Country</i>	MOTOR GENERADOR	POTENCIA <i>Power</i>	VELOCIDAD <i>Speed</i> (rpm)	TENSION <i>Voltage</i> (V)	CANTIDAD <i>Quantity</i>	SIZE <i>Tamaño</i>	ENTREGA <i>Delivery</i>
INGELECTRIC INGENIERIA DE SISTEMAS S.A.	KOREA	M	0-1500	0-900	0-690	1	500	2007
INGELECTRIC INGENIERIA DE SISTEMAS S.A.	KOREA	M	0-1500	0-900	0-690	1	500	2007
INGELECTRIC INGENIERIA DE SISTEMAS S.A.	KOREA	M	0-750	0-1000	0-690	1	450	2007
INGELECTRIC INGENIERIA DE SISTEMAS S.A.	KOREA	G	4650	750	690	2	900	2008
INGELECTRIC INGENIERIA DE SISTEMAS S.A.	KOREA	M	0-750	0-1000	0-690	1	450	2008
INGELECTRIC INGENIERIA DE SISTEMAS S.A.	KOREA	G	4650	750	690	2	900	2007
BAKKER SLIEDRECHT	HOLLAND	M	0-2950	0-660	0-660	3	630	2007
BAKKER SLIEDRECHT	HOLLAND	M	0-2400	0-900	0-660	2	630	2007
BAKKER SLIEDRECHT	HOLLAND	M	0-2200	0-800	0-660	1	630	2007
BAKKER SLIEDRECHT	CHINA	M	0-1640	0-1600	0-660	1	500	2007
BAKKER SLIEDRECHT	CHINA	M	0-1640	0-1600	0-660	1	500	2007
BAKKER SLIEDRECHT	HOLLAND	M	0-3000	0-900	0-660	2	630	2007
BAKKER SLIEDRECHT	HOLLAND	M	0-3000	0-900	0-660	4	630	2007
INGELECTRIC INGENIERIA DE SISTEMAS S.A.	ESPAÑA	G	3119	900	690	4	710	2007
INGELECTRIC INGENIERIA DE SISTEMAS S.A.	ESPAÑA	M	0-990/990	0-1200/1320	0-690/690	2	450	2007
INGELECTRIC INGENIERIA DE SISTEMAS S.A.	ESPAÑA	M	0-2450/2450	0/900/990	0-690/690	2	560	2007
INGELECTRIC INGENIERIA DE SISTEMAS S.A.	ESPAÑA	M	0-1000	0-1000	0-690	1	400	2007
BAKKER SLIEDRECHT	HOLLAND	M	0-1500	0-1200	0-660	1	450	2007
JUAN AZCUE,S.A.	SPAIN	M	650	2900	660	2	355	2007
BAKKER SLIEDRECHT	BELGIUM	M	0-6500/6500	0-253/325	0-3100/3100	2	900	2007
BAKKER SLIEDRECHT	HOLLAND	G	800	1000	500	1	630	2007
BAKKER SLIEDRECHT	HOLLAND	M	800	1000	500	1	630	2007
ECHEBASTAR FLEET, S.L.U	SPAIN	G	1000	1500	380	1	450	2007
BAKKER SLIEDRECHT	HOLLAND	M	0-1500	0-1800	0-660	2	450	2007
BAKKER SLIEDRECHT	HOLLAND	M	0-650	0-1800	0-660	2	400	2007
BAKKER SLIEDRECHT	HOLLAND	M	0-650	0-1800	0-660	2	400	2007
BAKKER SLIEDRECHT	HOLLAND	M	0-1500	0-1800	0-660	2	450	2007
BAKKER SLIEDRECHT	HOLLAND	M	0-1500	0-1200	0-660	2	450	2007
BAKKER SLIEDRECHT	HOLLAND	M	0-1700	0-900	0-660	1	500	2007
BAKKER SLIEDRECHT	HOLLAND	G	1800	750	400	2	630	2007
BAKKER SLIEDRECHT	HOLLAND	M	0-850	0-1000	0-660	1	450	2007
BAKKER SLIEDRECHT	HOLLAND	M	0-350	0-750	0-660	2	400	2007
BAKKER SLIEDRECHT	HOLLAND	M	0-1650	0-840	0-660	2	560	2007

CLIENTE <i>Customer</i>	PAIS <i>Country</i>	MOTOR GENERADOR	POTENCIA <i>Power</i>	VELOCIDAD <i>Speed</i> (rpm)	TENSION <i>Voltage</i> (V)	CANTIDAD <i>Quantity</i>	SIZE <i>Tamaño</i>	ENTREGA <i>Delivery</i>
BAKKER SLIEDRECHT	HOLLAND	G	3500	750	690	2	710	2007
BAKKER SLIEDRECHT	HOLLAND	M	0-350	0-750	0-660	2	355	2007
BAKKER SLIEDRECHT	HOLLAND	M	0-2200	0-800	0-660	1	630	2007
BAKKER SLIEDRECHT	HOLLAND	M	0-2400	0-900	0-660	2	630	2007
BAKKER SLIEDRECHT	HOLLAND	M	0-2950	0-660	0-660	3	630	2007
ASTILLEROS DE MURUETA,S.A.	SPAIN	G	1250	1000	380	2	500	2006
ASTILLEROS DE MURUETA,S.A.	SPAIN	G	1250	1500	380	1	500	2006
ASTILLEROS DE MURUETA,S.A.	SPAIN	G	1250	1500	380	1	500	2006
ASTILLEROS DE MURUETA,S.A.	SPAIN	G	1500	1500	380	1	500	2006
GARCIA COSTAS,JOSE	SPAIN	M	500	1500	400	3	355	2007
BAKKER SLIEDRECHT	HOLLAND	M	880/880	300/580	400/400	1	500	2006
BAKKER SLIEDRECHT	HOLLAND	G	1800	1300	600	1	500	2006
BAKKER SLIEDRECHT	HOLLAND	M	1333/1333	867/1200	600/600	1	560	2006
GARCIA COSTAS,JOSE	SPAIN	G	380	1500	500	1	355	2006
BAKKER SLIEDRECHT	CHINA	M	550	1500	400	1	400	2005
BAKKER SLIEDRECHT	CHINA	M	550	1500	400	1	400	2006
JOSE GARCIA COSTAS, S.L.U.	SPAIN	M	316	1800	440	1	355	2005
BAKKER SLIEDRECHT	BELGIUM	M	880	1800	480	1	400	2005
BAKKER SLIEDRECHT	BELGIUM	M	450	1800	450	1	355	2005
BAKKER SLIEDRECHT	BELGIUM	M	450	1800	450	1	355	2005
BAKKER SLIEDRECHT	HOLLAND	M	0-2200	0-800	0-600	1	630	2006
BAKKER SLIEDRECHT	HOLLAND	M	0-2400	0-900	0-660	2	630	2006
BAKKER SLIEDRECHT	HOLLAND	M	0-2950	0-660	0-660	3	630	2006
INGELECTRIC INGENIERIA DE SISTEMAS S.A.	SPAIN	M	0/1000	0/178	0/725	2	800	2005
INGELECTRIC INGENIERIA DE SISTEMAS S.A.	SPAIN	G	1050	1500	690	4	450	2005
GARCIA COSTAS	SPAIN	M	450	1500	400	2	355	2005
BAKKER SLIEDRECHT	CHINA	M	0-1750	0-1066	0-690	1	500	2005
BAKKER SLIEDRECHT	BELGIUM	M	0-250	0-1000	0-660	3	355	2006
MARPRO TRAWLING	SOUTH AFRICA	M	331	900	410	1	355	2006
BAKKER SLIEDRECHT	BELGIUM	M	1250	280	3x660	1	800	2006
PESQUERIA VASCO MONTAÑANESA, S.A.	SPAIN	G	850	1500	380	1	400	2005
GARCIA COSTAS	SPAIN	G	135	1500	220	1	355	2005
BAKKER SLIEDRECHT	BELGIUM	M	0-250	0-1000	0-660	4	355	2005
BAKKER SLIEDRECHT	BELGIUM	M	750	1500	400	1	400	2005
BAKKER SLIEDRECHT	BELGIUM	M	1250	296	616	1	800	2005
BAKKER SLIEDRECHT	HOLLAND	M	700	1500	415	1	400	2005

CLIENTE <i>Customer</i>	PAIS <i>Country</i>	MOTOR GENERADOR	POTENCIA <i>Power</i>	VELOCIDAD <i>Speed</i> (rpm)	TENSION <i>Voltage</i> (V)	CANTIDAD <i>Quantity</i>	SIZE <i>Tamaño</i>	ENTREGA <i>Delivery</i>
GARCIA COSTAS	SPAIN	M	441	1500	400	1	355	2005
GARCIA COSTAS	SPAIN	M	331	1500	400	2	355	2005
GARCIA COSTAS	SPAIN	G	500	1500	380	2	355	2004
GARCIA COSTAS	SPAIN	G	1200	1500	400	2	450	2005
GARCIA COSTAS	SPAIN	G	1500	1500	400	1	500	2005
GARCIA COSTAS	SPAIN	G	1200	1500	400	2	450	2005
ASTILLEROS DE MURUETA	SPAIN	G	1500	1500	380	1	500	2005
ASTILLEROS DE MURUETA	SPAIN	G	595	1500	380	2	400	2005
ASTILLEROS DE MURUETA	SPAIN	G	1100	1500	380	2	500	2005
ASTILLEROS DE MURUETA	SPAIN	G	1350	1000	380	2	560	2005
BAKKER SLIEDRECHT	HOLLAND	M	0-551/551	0-1060/1700	0-680/680	1	400	2005
ATUNSA	SPAIN	G	956	1500	380	1	500	2005
GARCIA COSTAS	SPAIN	M	441	1500	400	1	355	2005
GARCIA COSTAS	SPAIN	M	515	1500	400	2	355	2005
BAKKER SLIEDRECHT	BELGIUM	M	1250	280	3x660	1	800	2005
BAKKER SLIEDRECHT	BELGIUM	M	1250	280	3x660	1	800	2005
BAKKER SLIEDRECHT	HOLLAND	M	400	1470	3x415	1	355	2004
BAKKER SLIEDRECHT	HOLLAND	M	400	1470	3x415	1	355	2004
GARCIA COSTAS	SPAIN	M	316	1800	440	1	355	2004
BAKKER SLIEDRECHT	CHINA	M	0-750	0-1500	0-660	1	450	2004
GARCIA COSTAS	SPAIN	G	475	1500	380	1	355	2004
BAKKER SLIEDRECHT	HOLLAND	M	550	1500	400	1	400	2004
BAKKER SLIEDRECHT	HOLLAND	M	550	1500	400	1	400	2004
BAKKER SLIEDRECHT	HOLLAND	M	550	1500	400	1	400	2004
BAKKER SLIEDRECHT	HOLLAND	M	550	1500	400	1	400	2005
GARCIA COSTAS	SPAIN	G	450	1500	400	2	355	2004
GARCIA COSTAS	SPAIN	G	450	1500	400	2	355	2004
GARCIA COSTAS	SPAIN	M	295	1500	380	1	355	2004
PESQUERIA VASCO-MONTAÑANESA	SPAIN	G	850	1500	380	1	400	2004
INGELECTRIC INGENIERIA DE SISTEMAS S.A.	SPAIN	M	0-715	0-1200	0-690	1	400	2004
INGELECTRIC INGENIERIA DE SISTEMAS S.A.	SPAIN	M	0-715	0-1200	0-690	1	400	2004
BAKKER SLIEDRECHT	HOLLAND	M	0-800	0-1000	0-660	2	450	2004
BAKKER SLIEDRECHT	HOLLAND	M	0-800	0-1000	0-660	2	450	2004
GARCIA COSTAS	SPAIN	M	367	1500	380	1	355	2003
BAKKER SLIEDRECHT	CHINA	M	1444	400	3x690	1	630	2004
GARCIA COSTAS	SPAIN	G	515	1500	380	1	355	2004

CLIENTE <i>Customer</i>	PAIS <i>Country</i>	MOTOR GENERADOR	POTENCIA <i>Power</i>	VELOCIDAD <i>Speed</i> (rpm)	TENSION <i>Voltage</i> (V)	CANTIDAD <i>Quantity</i>	SIZE <i>Tamaño</i>	ENTREGA <i>Delivery</i>
GARCIA COSTAS	SPAIN	G	255	1500	400	1	355	2004
BAKKER SLIEDRECHT	HOLLAND	M	0-1650	0-900	0-660	4	500	2004
GARCIA COSTAS	SPAIN	G	1000	1500	380	1	450	2003
GARCIA COSTAS	SPAIN	G	1000	1500	380	1	450	2003
GARCIA COSTAS	SPAIN	G	468	1500	500	2	355	2003
GARCIA COSTAS	SPAIN	M	440	900	500	1	355	2003
GARCIA COSTAS	SPAIN	M	800	1500	400	1	355	2003
GARCIA COSTAS	SPAIN	G	1150	1000	400	1	500	2003
GARCIA COSTAS	SPAIN	G	1150	1000	400	3	500	2003
GARCIA COSTAS	SPAIN	G	1500	1000	400	1	500	2003
GARCIA COSTAS	SPAIN	M	368	1500	400	3	355	2004
BAKKER SLIEDRECHT	HOLLAND	M	650	1500	380	1	400	2003
BAKKER SLIEDRECHT	HOLLAND	M	650	1500	380	1	400	2003
GARCIA COSTAS	SPAIN	G	415	1500	380	1	355	2003
INGELECTRIC INGENIERIA DE SISTEMAS S.A.	BELGIUM	M	0-2150/2150	100/1000/1200	0-690/690	1	500	2003
INGELECTRIC INGENIERIA DE SISTEMAS S.A.	BELGIUM	M	0-3000/3000	0/1000/1200	0-690/690	1	560	2003
INGELECTRIC INGENIERIA DE SISTEMAS S.A.	BELGIUM	G	3375	1000	690	1	630	2003
INGELECTRIC INGENIERIA DE SISTEMAS S.A.	BELGIUM	G	6750	1200	6600	1	710	2003
ASTILLEROS DE MURUETA, S.A.	SPAIN	G	1200	1500	380	2	500	2003
ASTILLEROS DE MURUETA, S.A.	SPAIN	G	1200	1500	380	1	500	2003
ASTILLEROS DE MURUETA, S.A.	SPAIN	G	1500	1500	380	1	500	2003
ASTILLEROS DE MURUETA, S.A.	SPAIN	G	1200	1500	380	1	500	2003
BAKKER SLIEDRECHT	HOLLAND	M	0-800	0-1000	0-660	4	450	2004
BAKKER SLIEDRECHT	HOLLAND	M	0-800	0-1000	0-660	5	450	2004
S.C.A.M./ COBRECAF CMB	FRANCE	G	500	1500	380	1	355	2003
GARCIA COSTAS	SPAIN	G	1000	1500	380	2	450	2003
GARCIA COSTAS	SPAIN	G	405	1500	400	1	355	2003
BAKKER SLIEDRECHT	BELGIUM	M	1700	394	3052	1	800	2003
GARCIA COSTAS	SPAIN	G	370	1500	500	1	355	2003
GARCIA COSTAS	SPAIN	G	370	1500	500	1	355	2003
GARCIA COSTAS	SPAIN	G	630	1500	400	1	400	2003
GARCIA COSTAS	SPAIN	G	450	1500	400	1	400	2003
GARCIA COSTAS	SPAIN	M	330	1000	500	1	355	2003
GARCIA COSTAS	SPAIN	G	450	1500	400	1	400	2003
GARCIA COSTAS	SPAIN	G	630	1500	400	1	400	2003
GARCIA COSTAS	SPAIN	G	370	1500	500	1	355	2003

CLIENTE <i>Customer</i>	PAIS <i>Country</i>	MOTOR GENERADOR	POTENCIA <i>Power</i>	VELOCIDAD <i>Speed</i> (rpm)	TENSION <i>Voltage</i> (V)	CANTIDAD <i>Quantity</i>	SIZE <i>Tamaño</i>	ENTREGA <i>Delivery</i>
GARCIA COSTAS	SPAIN	G	370	1500	500	1	355	2003
GARCIA COSTAS	SPAIN	M	330	1000	500	1	355	2003
GARCIA COSTAS	SPAIN	G	400	1500	400	2	355	2003
GARCIA COSTAS	SPAIN	G	1000	1500	400	2	450	2003
GARCIA COSTAS	SPAIN	M	588	1500	400	1	355	2003
GARCIA COSTAS	SPAIN	G	1500	1000	400	1	560	2003
GARCIA COSTAS	SPAIN	G	1150	1000	400	1	500	2003
GARCIA COSTAS	SPAIN	G	1150	1000	400	3	500	2003
GARCIA COSTAS	SPAIN	M	588	1500	400	1	355	2003
BAKKER SLIEDRECHT	HOLLAND	M	750	1200	3x440	1	400	2003
M.S.P.	GERMANY	G	510	750	380	1	450	2003
BAKKER SLIEDRECHT	BELGIUM	M	450	1775	3x450	1	355	2003
GARCIA COSTAS	SPAIN	M	515	1500	400	3	355	2003
ASTILLEROS DE MURUETA, S.A.	SPAIN	G	1250	1000	380	1	500	2003
ASTILLEROS DE MURUETA, S.A.	SPAIN	G	1250	1500	380	1	500	2003
ASTILLEROS DE MURUETA, S.A.	SPAIN	G	1250	1500	380	1	500	2003
ASTILLEROS DE MURUETA, S.A.	SPAIN	G	1250	1000	380	2	500	2003
GARCIA COSTAS	SPAIN	M	588	1500	400	1	355	2003
PESQUERAS ECHEBASTAR, S.A.	SPAIN	G	1300	1500	380	2	450	2002
BAKKER SLIEDRECHT	BELGIUM	M	1100	750	440	2	450	2003
BAKKER SLIEDRECHT	INDIA	M	1075	0/600/850/1020	750	1	630	2003
GOIMENDI,S.A.	SPAIN	M	600	1800	6600	2	400	2003
BAKKER SLIEDRECHT	BELGIUM	M	0-3400	0-280	0-3100	1	800	2003
BAKKER SLIEDRECHT	HOLLAND	M	1320	352,8	690	2	500	2003
BAKKER SLIEDRECHT	HOLLAND	M	1320	352,8	690	2	500	2003
BAKKER SLIEDRECHT	HOLLAND	M	400	1770	3x440	1	355	2002
BAKKER SLIEDRECHT	HOLLAND	M	575	1000	3x660	2	450	2002
BAKKER SLIEDRECHT	HOLLAND	M	575	1800	3x660	1	400	2002
BAKKER SLIEDRECHT	HOLLAND	M	575	1000	3x660	2	450	2003
BAKKER SLIEDRECHT	HOLLAND	M	575	1800	3x660	1	400	2003
BAKKER SLIEDRECHT	HOLLAND	M	1000	1200	3x660	1	500	2002
INGELECTRIC INGENIERIA DE SISTEMAS S.A.	SPAIN	M	0-2150	100/1100	0-690	2	500	2003
INGELECTRIC INGENIERIA DE SISTEMAS S.A.	SPAIN	M	0-1200	0-1000	0-690	1	450	2003
INGELECTRIC INGENIERIA DE SISTEMAS S.A.	BELGIUM	G	3375	1000	690	2	630	2003
INGELECTRIC INGENIERIA DE SISTEMAS S.A.	SPAIN	G	625	1500	690	1	400	2003

CLIENTE <i>Customer</i>	PAIS <i>Country</i>	MOTOR GENERADOR	POTENCIA <i>Power</i>	VELOCIDAD <i>Speed</i> (rpm)	TENSION <i>Voltage</i> (V)	CANTIDAD <i>Quantity</i>	SIZE <i>Tamaño</i>	ENTREGA <i>Delivery</i>
INGELECTRIC INGENIERIA DE SISTEMAS S.A.	SPAIN	M	0-3000	100/1200	0-690	1	560	2003
INGELECTRIC INGENIERIA DE SISTEMAS S.A.	SPAIN	M	550	1500/0/1500	690	1	400	2003
INGELECTRIC INGENIERIA DE SISTEMAS S.A.	SPAIN	M	0-2150	100/1100	0-690	2	500	2003
INGELECTRIC INGENIERIA DE SISTEMAS S.A.	BELGIUM	G	3375	1000	690	2	630	2003
INGELECTRIC INGENIERIA DE SISTEMAS S.A.	SPAIN	G	625	1500	690	1	400	2003
INGELECTRIC INGENIERIA DE SISTEMAS S.A.	SPAIN	M	550	1500/0/1500	690	1	400	2003
INGELECTRIC INGENIERIA DE SISTEMAS S.A.	SPAIN	M	0-3000	0-1200	0-690	1	560	2003
INGELECTRIC INGENIERIA DE SISTEMAS S.A.	SPAIN	M	0-1200	0-1000	0-690	1	450	2003
GARCIA COSTAS	SPAIN	M	440	900	500	2	355	2002
GARCIA COSTAS	SPAIN	G	220	1500	380	1	355	2002
GARCIA COSTAS	SPAIN	G	1000	1500	380	1	450	2002
GARCIA COSTAS	SPAIN	G	1000	1500	380	1	450	2002
GOIMENDI,S.A.	SPAIN	M	600	1800	6600	2	400	2002
INGELECTRIC INGENIERIA DE SISTEMAS S.A.	BELGIUM	M	0-7500/7500	0-1000/1200	0-3300/3300	1	900	2003
INGELECTRIC INGENIERIA DE SISTEMAS S.A.	BELGIUM	G	6750	1200	6600	2	710	2003
INGELECTRIC INGENIERIA DE SISTEMAS S.A.	BELGIUM	M	0-3400/3400	0-280/320	0-3300/3300	1	800	2002
BAKKER SLIEDRECHT	BELGIUM	M	0-3400/3400	0-280/320	0-3300/3300	1	800	2003
BAKKER SLIEDRECHT	HOLLAND	M	630/630	800/1200	660/660	1	400	2002
BAKKER SLIEDRECHT	HOLLAND	M	550	1500	660	1	400	2002
GARCIA COSTAS	SPAIN	M	490	1500	400	2	355	2001
GARCIA COSTAS	SPAIN	M	330	1500	400	2	355	2002
BAKKER SLIEDRECHT	SCOTLAND	M	800	1000	690	2	400	2002
BAKKER SLIEDRECHT	ENGLAND	M	1100	296	3x660	1	800	2002
BAKKER SLIEDRECHT	HOLLAND	M	500	1470	400	2	355	2002
INGELECTRIC INGENIERIA DE SISTEMAS S.A.	BELGIUM	M	0-3400/3400	0-280/320	0-3300/3300	1	800	2002
INGELECTRIC INGENIERIA DE SISTEMAS S.A.	BELGIUM	M	0/7500/7500	0/1000/1200	0-3300/3300	1	900	2003
INGELECTRIC INGENIERIA DE SISTEMAS S.A.	BELGIUM	G	6750	1200	6600	2	710	2003
GARCIA COSTAS	SPAIN	G	550	1000	380	1	400	2002
BAKKER SLIEDRECHT	BELGIUM	M	0-3800	0-1000	0-3100	2	630	2002
BAKKER SLIEDRECHT	BELGIUM	M	0-3800	0-1000	0-3100	2	630	2002

CLIENTE <i>Customer</i>	PAIS <i>Country</i>	MOTOR GENERADOR	POTENCIA <i>Power</i>	VELOCIDAD <i>Speed</i> (rpm)	TENSION <i>Voltage</i> (V)	CANTIDAD <i>Quantity</i>	SIZE <i>Tamaño</i>	ENTREGA <i>Delivery</i>
BAKKER SLIEDRECHT	BELGIUM	M	0-6000	0-1000	0-3100	2	710	2002
BAKKER SLIEDRECHT	BELGIUM	G	2250	1800	440	1	560	2002
BAKKER SLIEDRECHT	BELGIUM	M	0-575	0-750	0-440	2	400	2002
BAKKER SLIEDRECHT	BELGIUM	M	0-900	0-1200	0-690	2	400	2002
BAKKER SLIEDRECHT	BELGIUM	M	0-3800	0-1000	0-3100	1	630	2002
BAKKER SLIEDRECHT	BELGIUM	G	10200	1200	6600	3	900	2002
BAKKER SLIEDRECHT	BELGIUM	M	400	1800	6600	3	355	2002
BAKKER SLIEDRECHT	BELGIUM	M	0-575	0-750	0-440	2	400	2002
BAKKER SLIEDRECHT	BELGIUM	M	0-575	0-750	0-440	1	400	2002
BAKKER SLIEDRECHT	BELGIUM	M	0-575	0-750	0-440	1	400	2002
GARCIA COSTAS	SPAIN	M	368	1500	380	1	355	2002
BAKKER SLIEDRECHT	HOLLAND	M	0-6500	0-253	0-3100	1	900	2003
BAKKER SLIEDRECHT	HOLLAND	M	0-6500	0-253	0-3100	1	900	2003